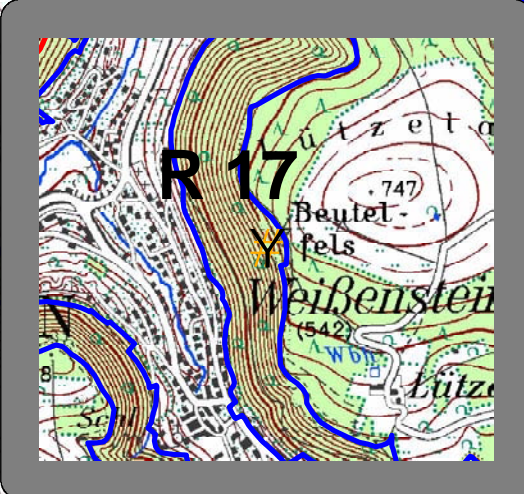
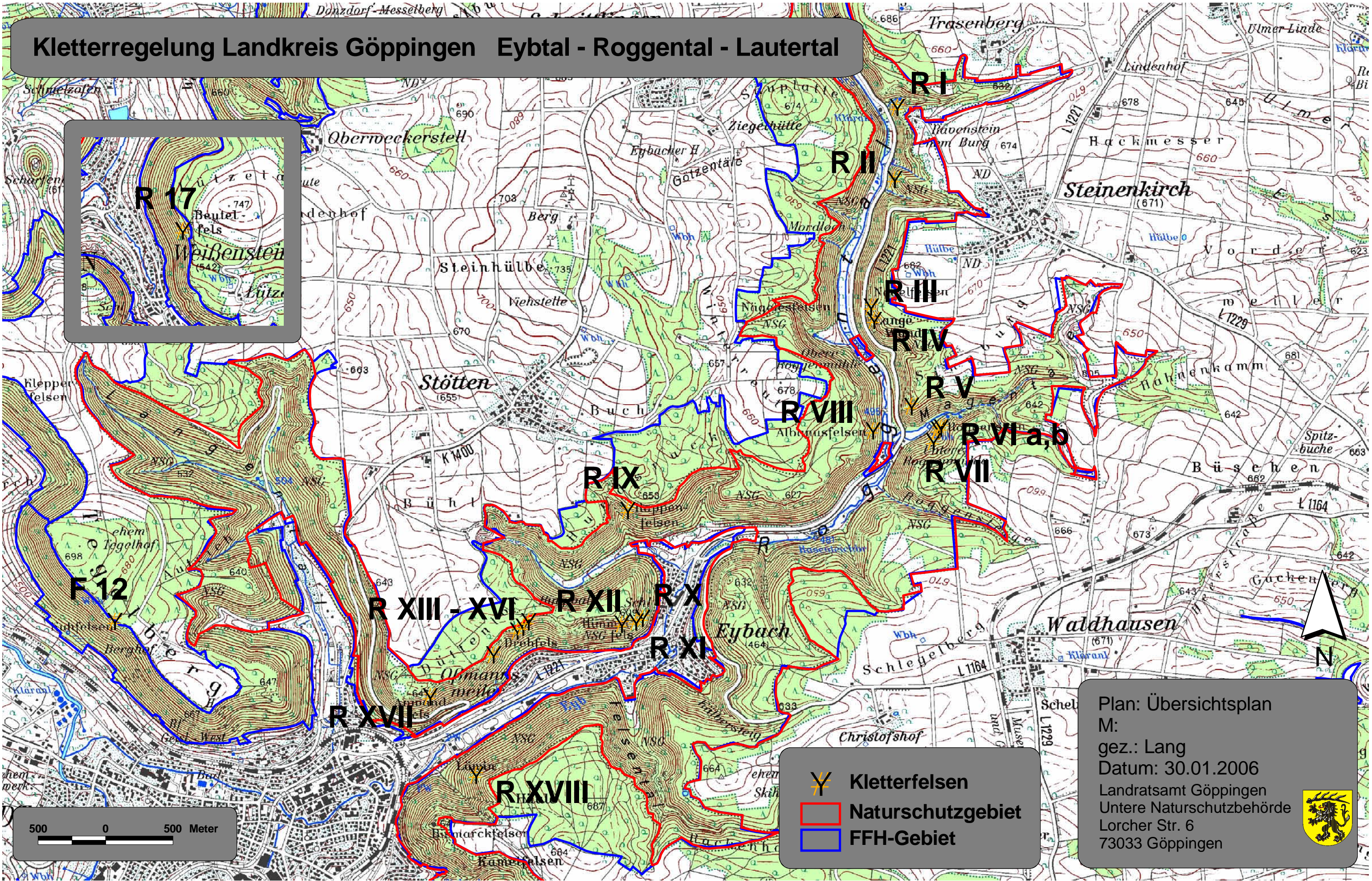





Kletterregelung Landkreis Göppingen Eybtal - Roggental - Lautertal



 Kletterfelsen
 Naturschutzgebiet
 FFH-Gebiet

Plan: Übersichtsplan
M:
gez.: Lang
Datum: 30.01.2006
Landratsamt Göppingen
Untere Naturschutzbehörde
Lorcher Str. 6
73033 Göppingen

